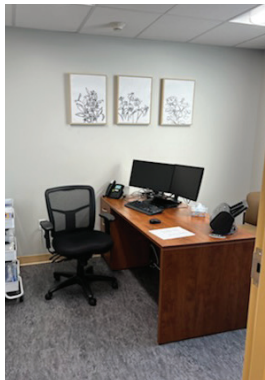
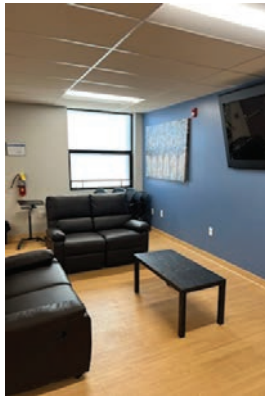




The goal of the Crisis Access Point is to provide a safe and less costly alternative to divert individuals away from jails and emergency rooms and into treatment services. These services would allow for further observations, connecting the individual to ongoing care, and avoiding inpatient admission.



### Wentzville

1032 Crosswinds Ct.  
Wentzville, MO 63385

*(entrance at rear of building)*

### Jefferson City

227 Metro Drive  
Jefferson City, MO 65109

*(entrance at rear of building)*

### Rolla

1450 E. 10th Street  
Rolla, MO 65109

*(entrance on East side of building)*

Direct Line: 833.356.2427

Fax Line: 660.207.7440

[compasshealthnetwork.org](http://compasshealthnetwork.org)



## CRISIS ACCESS POINT Stabilization Centers

Bringing care to those in need...  
our communities.



Compass Health  
Network



### Access To Care

The crisis centers are a 24/7/365, no wrong door entry program that provides rapid access to triage, stabilization services, and linkage to appropriate community services for individuals experiencing a behavioral health crisis.

### Our Team

Our staff consists of a multi-disciplinary team that includes nurses, case workers, mental health technicians, licensed qualified mental health professionals, and psychiatrists/physicians assistants.

### Resources

The crisis center works in collaboration with the local social service providers to develop needed resources and enhance the existing system of care.

### Who We Serve

Adults 18 and over who are underserved, underinsured, or uninsured and dealing with a mental health or substance use crisis.

### Services Offered

- Comprehensive assessment by qualified professional
- Brief therapy/crisis intervention
- Psychiatric assessment and medication prescription
- Assistance with withdrawal from substances
- Person-centered transition planning and transportation
- Referral to behavioral health services

### Who Should Be Referred?

Adults 18 and over and individuals experiencing a behavioral health crisis:

- Suicidal/homicidal ideation
- Aggressive behavior outbursts
- Victim of domestic violence or other trauma
- Intoxicated on a chemical substance
- Experiencing psychotic symptoms (hallucinations/delusions)
- Needs psychiatric medication refill or initial evaluation for psychiatric medications

### Who Should NOT Be Referred?

- Anyone who is not currently ambulatory and able to meet their own basic needs (e.g. toilet)
- Individuals who have been deemed imminent risk of harm to self or others and judged to need immediate hospitalization
- Individuals experiencing a medical emergency or otherwise not currently medically stable
- Individuals who have committed a serious criminal offence and are in process of incarceration

### Our Mission

CAP offers Crisis Stabilization Services 24 Hours a day/7 Days a week to adults who are in need of immediate assistance dealing with a mental health or substance use crisis. CAP is a voluntary program and is meant to be short-term (up to 23 hours).